

AC6000 Series



Full-auto Glycated Hemoglobin HbA1c Analyzer

Specifications

| Model | AC6601 Full-auto glycated hemoglobin HbA1c Analyzer |
|------------------------------|---|
| Basic Parameters | |
| Testing Method | Chromatography/ion-exchange liquid chromatography |
| Testing Item | Glycated hemoglobin HbA1c |
| Testing Scope | 3% - 18% |
| Testing Parameters | Precision (CV) ≤3% |
| Testing Time | 4 minutes (including reporting) |
| Sample type | Venous blood (EDTA anticoagulation), Peripheral finger blood |
| Functional Parameters | |
| Photometer | 415nm LED Integral flow colorimeter |
| Sampling mode | Full-auto 25-position sample turntable (20 sample positions, 2 quality control positions, 1 emergency position, 1 cleaning position, 1 zero position) |
| Testing mode | Auto test for batch, single test for emergency |
| Calibration | 2 points calibration |
| Thermostatic control | Column and reagent thermostatic control: 25 ± 1°C |
| Reagent matching | One piece of column and reagent consumable/300 pieces of testing samples |
| Reagent allocation | Each standard package includes A, B, C, D eluent, calibrator, hemolytic agent, pump tubing |
| Output Parameters | |
| Display | 320x240 LCD Graphic Display, displaying real-time testing curve |
| Printer | 58mm Thermal printer, printing testing curve and report |
| Report Output | IFCC concentration value, NGSP area percentage, ADAG average glucose |
| Data storage | 1000 test report (including testing curve) |
| Communication interface | RS232 communication interface, connecting to HIS/LIS system |
| Working Parameters | |
| Power Supply | 220V ~ 50HZ 215VA |
| size | 408mm x 390mm x 230mm |
| Weight | 10kg |
| Working Environment | Temperature 15°C-30°C, Relative humidity ≤85% |



AC6601 HbA1c Viewable Accuracy

—•Faster• More accurate• More convenient•—

Batch testing No wait Inside heating Precision control One step testing



JIANGSU AUDICOM MEDICAL TECHNOLOGY CO.,LTD

Address:4F, No 4 Building, High-tech Industrial Park, No.36 Nanwei 4 Rd.,
Dingmao,Zhenjiang,Jiangsu, China
Tel:0086-511-88880197 Fax:0086-511-84449169 P.C:212009
E-mail:sales@audicomivd.com

- got the ISO900:2000 Quality Certificate
- got the ISO13485:2003 Quality Certificate
- CE approved by TUV Rheinland

www.audicomivd.com

JIANGSU AUDICOM MEDICAL TECHNOLOGY CO.,LTD

Four

 new comprehensive upgrades

Faster More accurate More convenient

Upgrade

Inside heating

No pre-heating step outside, operate easily.

New

Durable pump tubing

Maintenance free micro pump, accurate sample volum, accurate results, imported high performance pump tubing, using life is for 1000 tests. Reduce replacement frequency, easier operation.

Upgrade

Filter for avoiding blockage

With filter device for sample, avoid blockage, reduce failure rate greatly.

New

Pressure monitor

With pressure testing device, monitor pressure at all times, results are more credible.

HbA1c Accuracy is the main key

Ac6601 can measure HbA1c accurately, provides reliable basis for screening, diagnosis, control and therapeutic effect monitoring of clinic blood-glucose.

Real-time Chromatogram True Reliability

AC6601 adopts the display technology with real-time summarized chromatogram, carries out the basic principle of analysis instruments and appears the real original data. Shows the whole process of testing and provides credible results to clinic.

AC6601 Accuracy + High Performance / Low Price

AC6601 adopts the principle of test methodology same as high pressure liquid chromatography HPLC and uses low pressure liquid chromatography in combination with the advanced test and analysis technology. Its good cost performance meets the testing requirements for glycosylated hemoglobin in labs of different grades hospitals.

6 Items of Test Technology Ensuring Accurate Results

Accurate Principle of Methodology

Adopts classical and accurate principle of methodology-Ion exchange liquid chromatography, It is the gold standard of HbA1c analysis, and it is the only analysis method to really separate HbA1c directly by measuring the piecemeal absorbance through continuous test on line, and obtain the correct area percentage with integration.

Accurate separation 4-gradient elution

The novel 4-gradient elution for HbA1c can separate accurately glycosylated hemoglobin with 4-gradient elution of corresponding concentration reagent aiming at HbA1c instead of routine elution process produced by high and low concentration mixture.

High Separation Liquid Chromatographic Column

High separation liquid chromatographic column made of imported resin with volume of Φ 9mm x 45mm and weight of 2.5g which is 15-20 times greater than general micro chromatographic column. High efficiency chromatographic column for 300 tests ensure the accuracy of test results.

High Sensitivity 415nm LED Integral Photometer

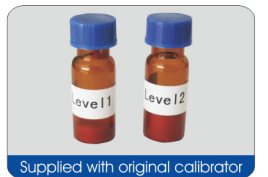
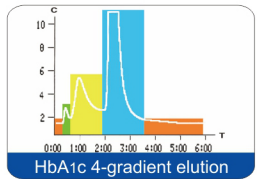
High sensitivity 415nm LED integral photometer has the characteristics of correct wavelength, stable light source, full aluminum alloy structure, high anti-interference performance, multi-lens focusing, micro cuvettes and high sensitivity. It can record accurately analysis curve.

Supply with Original Calibrator

The international standard value tracing is adopted. The authoritative reference material for quality control is used to transfer the numeric value. Each set of reagent is supplied with two sets of calibrator for proper calibration so as to ensure that the test results are correct and reliable and thoroughly to avoid individual error caused by factor calibration.

Precision Chromatographic Column and Thermostatic Apparatus

Precision chromatographic column and reagent thermostatic control apparatus ensure that Chromatographic column and reagent are not affected by environment temperature and effectively guarantees the repeatability and correctness of the test results.



6 Items of Human Oriented Design, Convenience, Speed and Reliability

Real-time summarized chromatogram, Intelligence process detection

The advanced embedded micro processing system + intelligence control software can really display testing curve and the real redisplay of testing process and can monitor and alarm for test results, absorbency, signal potential, peak time and reagent consumption. It can be operated with high proficiency.

Full-auto 25-position Sample Turntable, Optional Selection of Batch Test or Emergency Test

With full-auto 25-position sample turntable, it is unnecessary to use complicated rank sampling device and built-in hemolysis device. Batch test can be automatically carried out. Emergency test can be carried out at any time.

Full-open Structure, perfect flow path, low failure and easy maintenance

Full-open structure, Perfect solenoid valve flow path, it is unnecessary to use complicated sample mechanical 6-way and rotating distribution control valve. It is reliable for use and easy for maintenance.

5 μ l whole blood, for both labs and clinics

5 μ l whole blood, both venous blood and peripheral finger blood can be tested, suitable for labs for batch tests and also suitable for clinics for providing test results immediately.

With gas solution and bubble-removal technology, the error can be eliminated overall

Since the instrument is equipped with reagent solvability gas eliminating device and applies the cuvette bubble auto detection eliminating technology, the air bubbles which affect the test results can be eliminated overall without the complicated degassing device.

Saccharification concentration, area percentage and average glucose can be synchronously reported

The instrument can output the data including IFCC concentration value, NGSP area percentage and ADAG average glucose on the test report synchronously to meet the requirement of world standardization. It may memorize 1000 test curve reports and is equipped with RS232 communication interface and can connect directly to HIS/LIS system.

